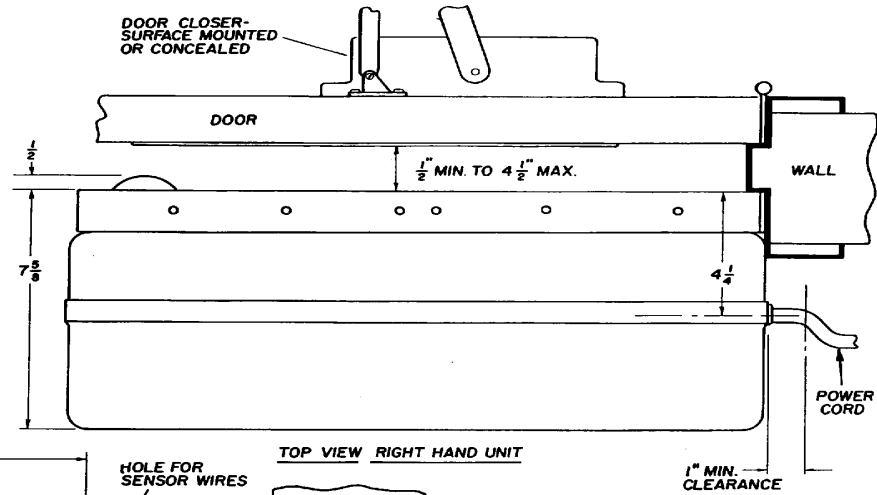


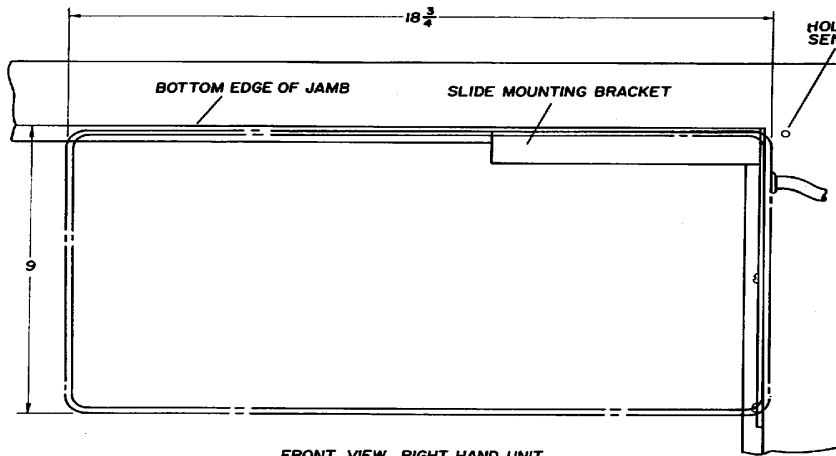
ROLLER SCUFF PLATE

MODEL 4300 INVERTED (VR)

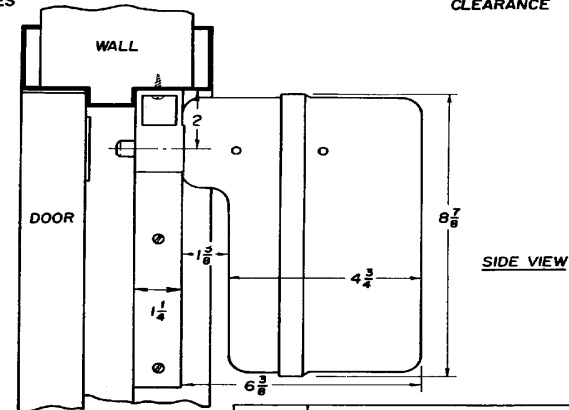
**POWER REQUIREMENTS - 115 VAC, 3AMP, SINGLE PHASE
GROUND RECEPTACLE, 9 FT. POWER CORD SUPPLIED.
SENSORS - TOUCH SWITCHES, WALL SWITCHES OR
RADIO CONTROL AS SPECIFIED.
BLANK LATCH STRIKE PLATE SUPPLIED.**



TOP VIEW RIGHT HAND UNIT



FRONT VIEW RIGHT HAND UNIT



SIDE VIEW

POWER ACCESS CORPORATION	
MODEL 4300 INVERTED	
ARCHITECTURAL REQUIREMENTS	
3/91	4261